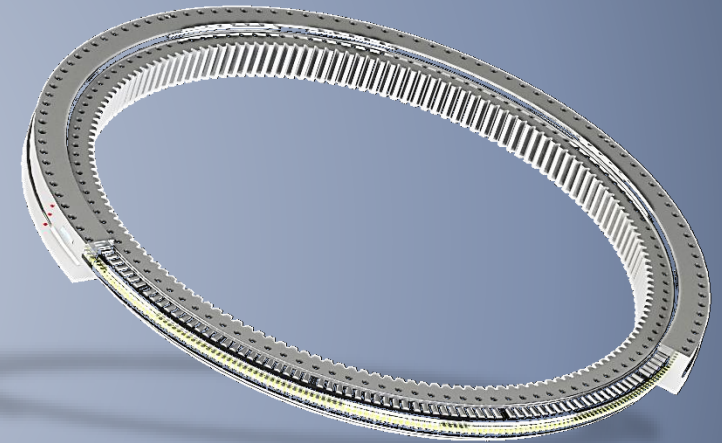
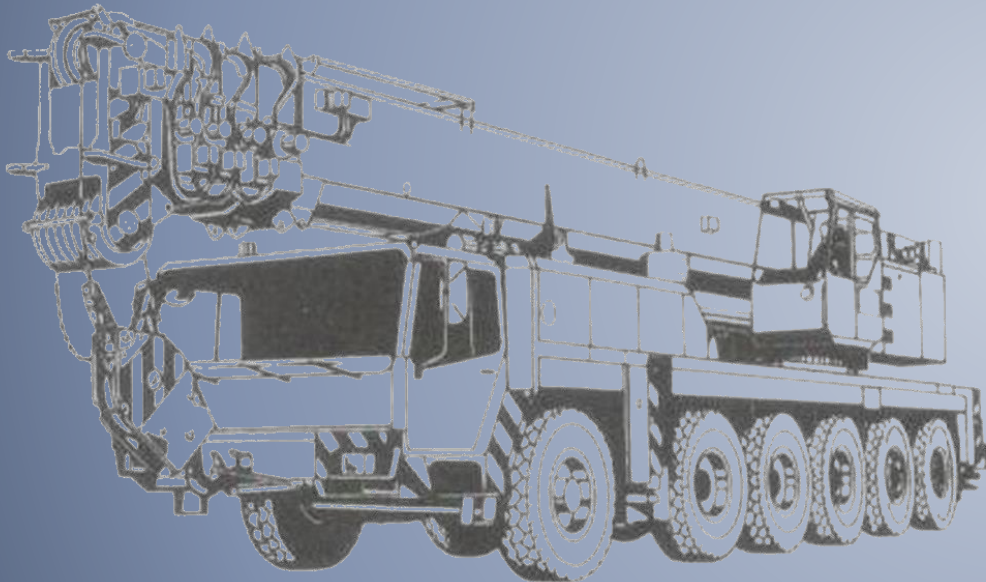


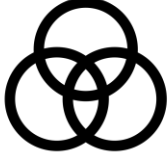
Put your trust in our slewing rings



## Capabilities



GROVE.

  
KRUPP

  
TEREX  
DEMAG



 **TADANO** **FAUN**

Available models:

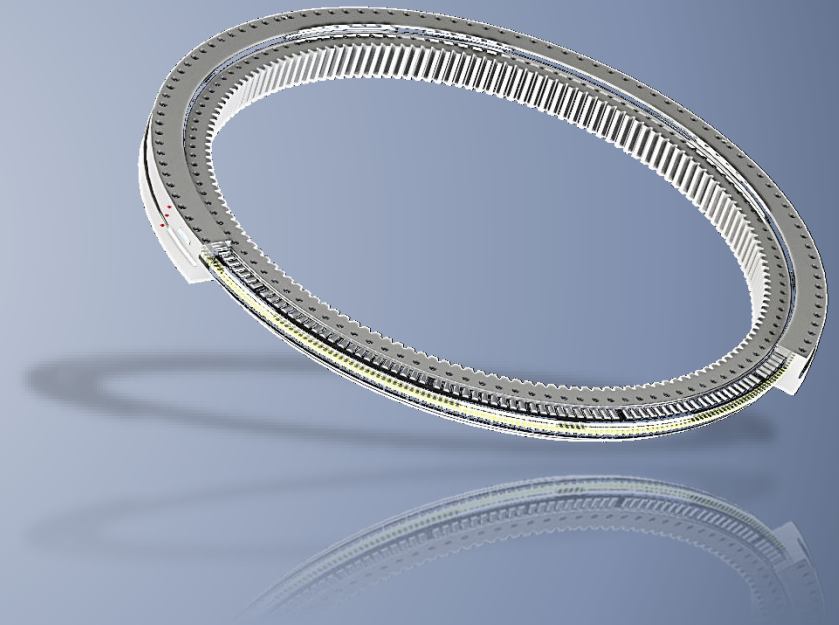


LTM 1xxx	AC25+	GMK	KMK	ATF
LR	CC600+			RTF
LTR				

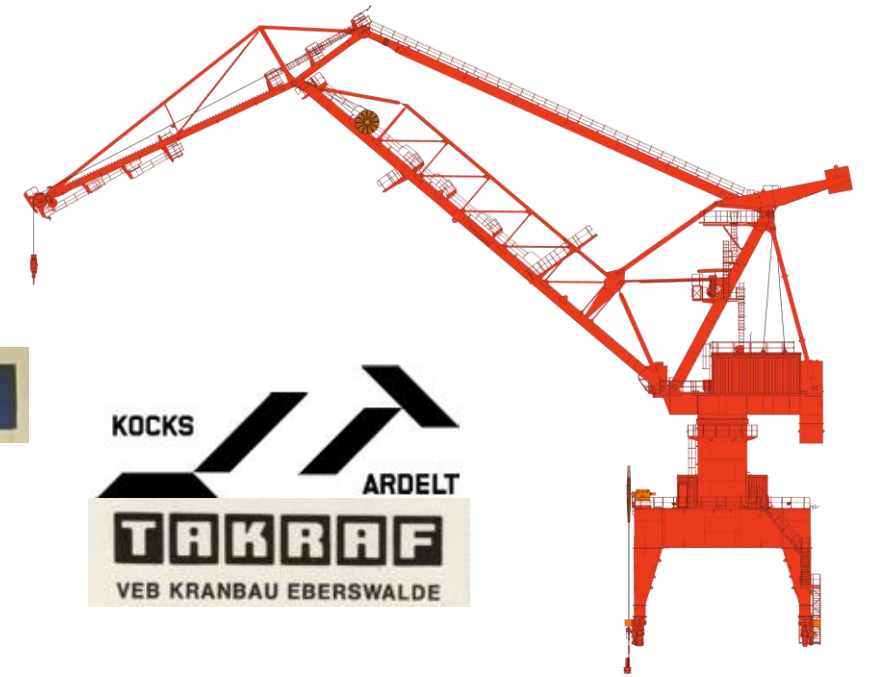
Ask for your part number!

DGWL Deutsche Großwälzlager GmbH

Your specialist for port equipment



Brands  
Floating and lemniscate cranes



TUKAN, KRANICH, KONDOR, ATLANT etc.



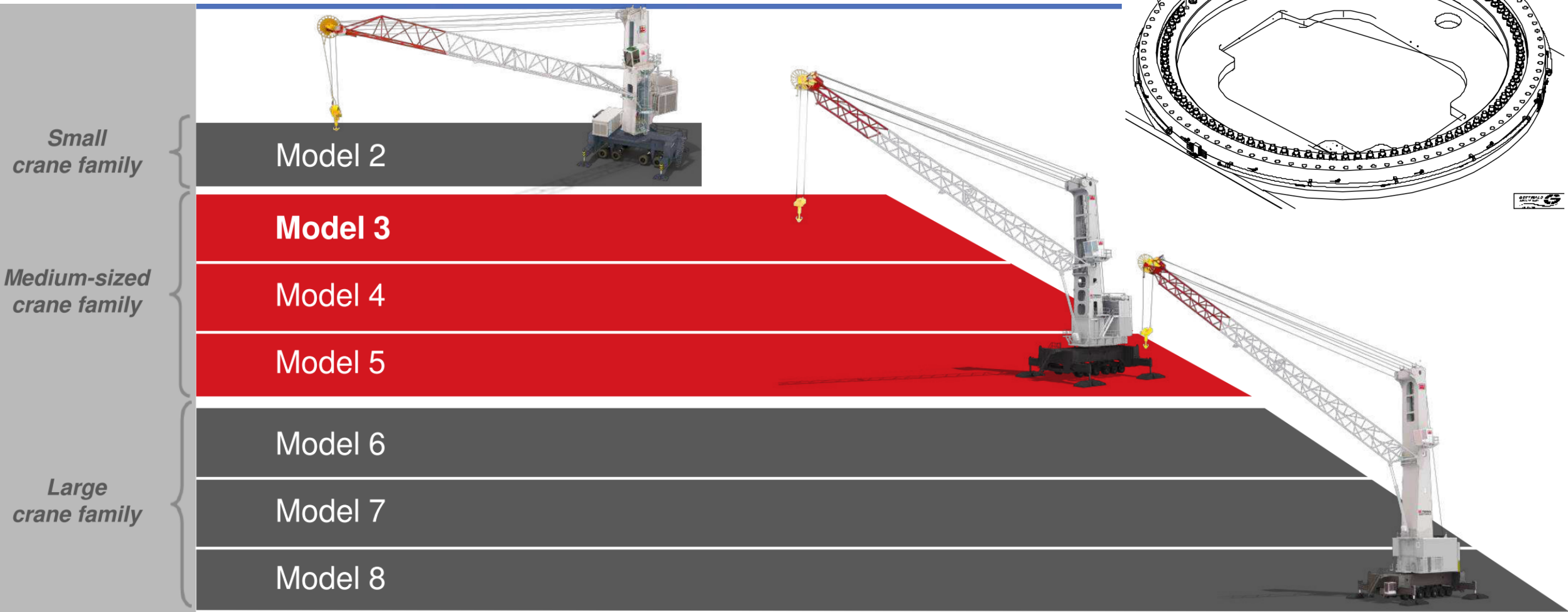
Brands  
Port handling cranes



**ITALGRU**  
PORT & OFFSHORE CRANES

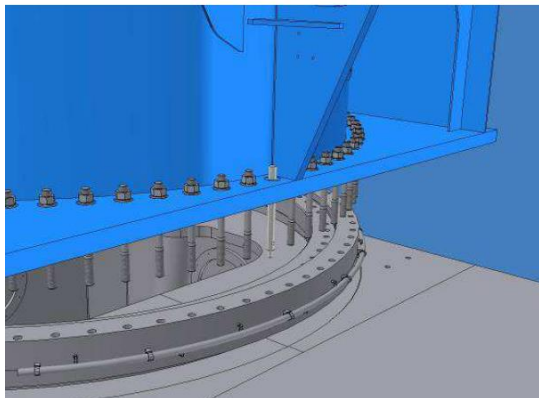
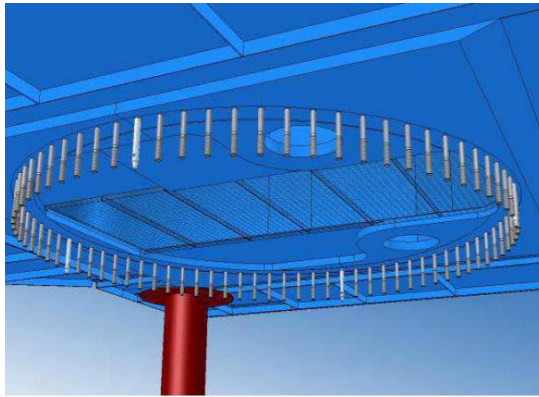


# Capabilities



# Available GOTTWALD models:

- HMK and GHMK series
- HMK170-360



## Features:

- Acc. to OEM standards
- Fastening sets available
- Assembly support available
- Flange machining available
- **WARRANTY: 36 months**



KONECRANES 08677340

ID: HMK 6407 II  
83688400

Stad boll  
2.3.4. (08677340)

Chassis slew ring mounting

Item	Description	Qty	Order No.	Cross ref
1	Slew ring bearing lubrication	1	50175400	1.1
2	stid boll	M30 x 260 - 10.9	00002700	
3	Hexagon nut	M30 - 10	00042100	
4	Washer	37 x 66 x 8	00042200	
501	Rubber bearing slew ring	1		HTJ



## Available Fantuzzi Reggiane models:

- MHC 40
- MHC 65
- MHC 115
- MHC 130
- MHC150
- MHC 200
- MHC 5000

### Features:

- Acc. to OEM standards
- Fastening sets available
- Assembly support available
- Flange machining available
- **WARRANTY: 36 months**

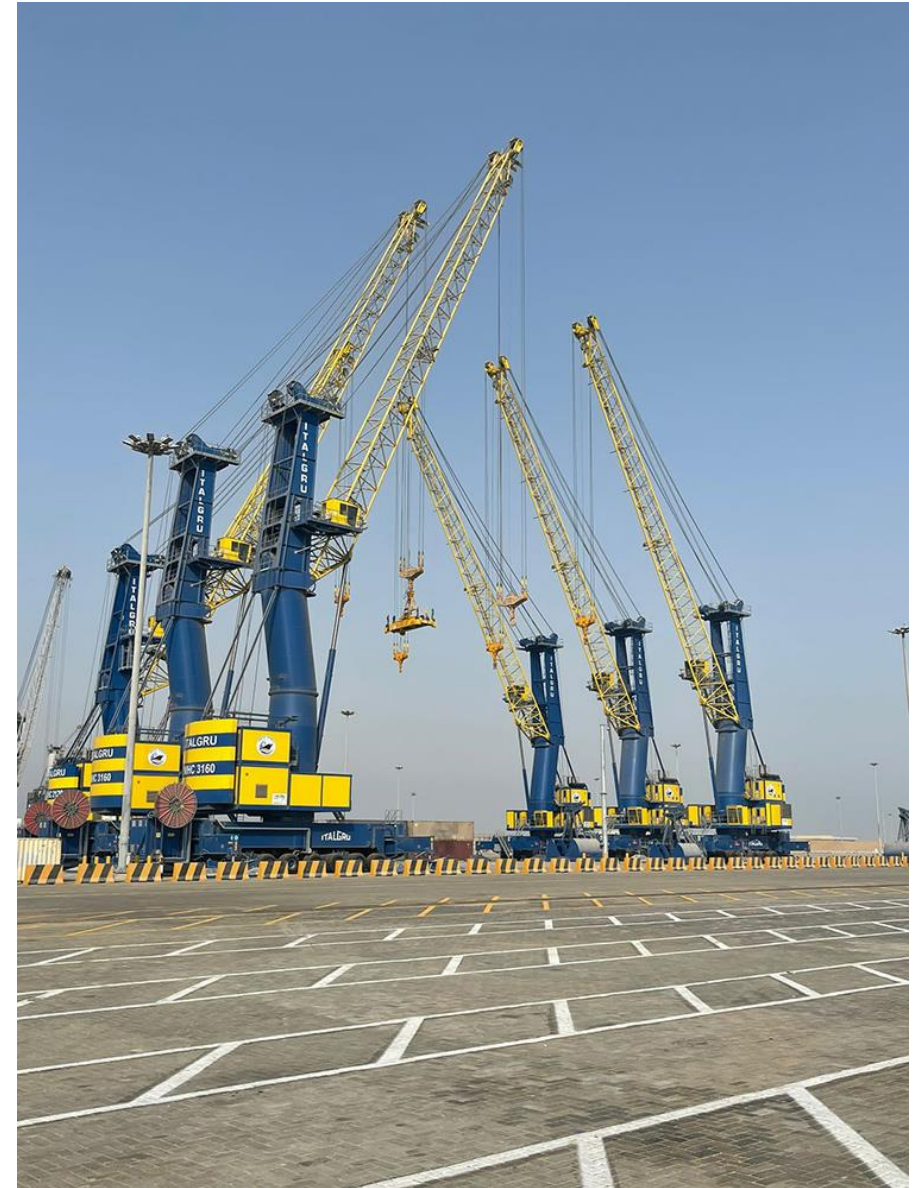


## Available Italgru models:

- IMHC 320
- IMHC 1580
- IMHC 2120

### Features:

- Acc. to OEM standards
- Fastening sets available
- Assembly support available
- Flange machining available
- **WARRANTY: 36 months**



## Available Liebherr models:

- LHM 180-800

### Features:

- Acc. to OEM standards
- Fastening sets available
- Assembly support available
- Flange machining available
- **WARRANTY: 36 months**



# Worldwide shippings and assemblies

